

PLANTING NOTES

- EXISTING UTILITIES SHOWN ARE APPROXIMATE AND SHALL BE VERIFIED IN THE FIELD PRIOR TO BEGINNING WORK. CONTRACTOR SHALL CONTACT THE CITY OF WILMINGTON AT 1-800-632-4949 FOR LOCATION OF EXISTING UTILITIES PRIOR TO BEGINNING CONSTRUCTION. THE CONTRACTOR SHALL EXERCISE CAUTION WHEN WORKING AROUND EXISTING UTILITIES TO REMAIN.
- NO EQUIPMENT IS ALLOWED ON THE SITE UNTIL ALL TREE PROTECTION FENCING AND SILT FENCING HAS BEEN INSTALLED AND APPROVED.
- PLANT LIST IS PROVIDED FOR CONVENIENCE ONLY. IN THE CASE OF DISCREPANCIES BETWEEN THE PLAN AND PLANT LIST QUANTITIES, THE PLAN SHALL TAKE PRECEDENCE.
- AFTER THE SITE IS STABILIZED AND FREE OF SEDIMENTATION, THE CONTRACTOR SHALL REMOVE ALL TEMPORARY EROSION CONTROL DEVICES, SILT, RIP RAP AND TEMPORARY STONE STAGING AREAS FOR REPLACEMENT WITH PLANTING SOIL. PROVIDE PLANTING ACCORDING TO THE LANDSCAPE PLAN.
- TEMPORARY EROSION CONTROL SEED MUST BE FULLY REMOVED PRIOR TO PREPARATION OF PERMANENT SEED, SOD OR LANDSCAPE BEDS.
- UNLESS OTHERWISE NOTED IN THE PLANT LIST, THE CONTRACTOR SHALL OBTAIN AND INSTALL ONLY PLANT MATERIAL THAT IS GROWN ON ITS OWN ROOT - GRAFTED OR BUDDED PLANT MATERIAL WILL BE REJECTED.
- ALL TREES SHALL BE OBTAINED FROM THE NURSERY WITH EXPOSED ROOT CROWNS, B&B MATERIAL DELIVERED TO SITE WITH BURIED OR RECENTLY BURIED ROOT CROWNS WILL BE REJECTED.
- FURNISHED PLANT MATERIAL SHALL MEET THE MINIMUM HEIGHT OR MINIMUM SPREAD DIMENSIONS SHOWN IN THE PLANT LIST HEADINGS. THE CONTRACTOR SHALL UTILIZE THE MOST STRINGENT DIMENSION SHOWN ON THE PLANT LIST.
- DO NOT PLANT IN STORM WATER CONVEYANCE SWALES OR PROVIDE FINE GRADING THAT DISRUPTS FLOW OR CHANGES LONGITUDINAL SLOPES.
- PLANT THE OUTER EDGES OF EACH PLANTING GROUP FOLLOWING THE BED OUTLINE ACCORDING TO THE PLAN. ONCE A SATISFACTORY MATCHED OUTER SHAPE IS OBTAINED, FILL THE CENTER OF EACH AREA WITH PLANTS ACCORDING TO THE PLAN AND SPACING NOTES.
- THE PLANTING LAYOUT WITHIN PLANTING BEDS SHOULD BE SHIFTED TO MINIMIZE CONFLICTS WITH EXISTING TREE ROOTS.
- THE CONTRACTOR SHALL SOD ALL DISTURBED AREAS INCLUDING CONSTRUCTION ACCESS OUTSIDE PROJECT LIMITS.
- REFER TO CIVIL DRAWINGS FOR ABBREVIATIONS AND LEGENDS.
- REFER TO SF-1 DRAWINGS FOR STREET LIGHT INFORMATION.

SF1A STREET TREE PLANTING SCHEDULE

SYM	QTY	BOTANICAL NAME	COMMON NAME	CAL/RT	MIN. HT.	MIN. SPR.	REMARKS
STREET TREES							
QL	4	QUERCUS LYRATA	OVERCUP OAK	2-2 1/2'	-	-	STRONG CENTRAL LEADER; NO INCLUDED BARK
ZS	15	ZELKOVA SERRATA	ZELKOVA	2-2 1/2'	-	-	UNIFORMLY BRACHED; NO INCLUDED BARK

PARKING LOT SHADE REQUIREMENT DATA TABLE:

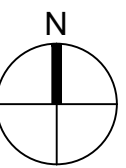
REQUIRED : 20% SHADE COVER FOR PARKING LOT PAVED SURFACE PROVIDED AT MATURE GROWTH

PROVIDED : 20% SHADE COVER FOR PARKING LOT PAVED SURFACE PROVIDED AT MATURE GROWTH

1,430 SF PARKING AREA
286 SF SHADE AT MATURE GROWTH

SCALE: 1" = 30'-0"

0 15 30 60



Approved Construction Plan

Name _____ Date _____

Planning _____

Traffic _____

Fire _____

CITY OF WILMINGTON
NORTH CAROLINA

Public Services • Engineering Division

APPROVED STORMWATER MANAGEMENT PLAN

Date: _____ Permit # _____

Signed: _____

1 inch

For each open utility cut of City streets, a \$325 permit shall be required from the City prior to occupancy and/or project acceptance.

REV.	NO.	DESCRIPTION	DATE
E	1	CITY OF WILMINGTON TRC/STORMWATER RE-SUBMITTAL AND CFPWA RE-SUBMITTAL	04/15/2016
D	1	CFPWA RE-SUBMITTAL	03/18/2016
C	1	NEW HANOVER COUNTY SEDIMENT AND EROSION CONTROL RE-SUBMITTAL	03/01/2016
B	1	CITY OF WILMINGTON TECHNICAL REVIEW COMMITTEE SUBMITTAL	02/03/2016
A	1	CITY OF WILMINGTON SUBDIVISION REVIEW BOARD SUBMITTAL	10/30/2015



License: F-1222
www.mckimcreed.com



Surface 676, P.A.
215 Morris Street, Suite 150
Durham, NC 27701
www.surface770.com
P: 919-419-1199
F: 919-419-1669

RIVER LIGHTS -
CONVENTIONAL NEIGHBORHOOD PH 1-A

PLANTING PLAN

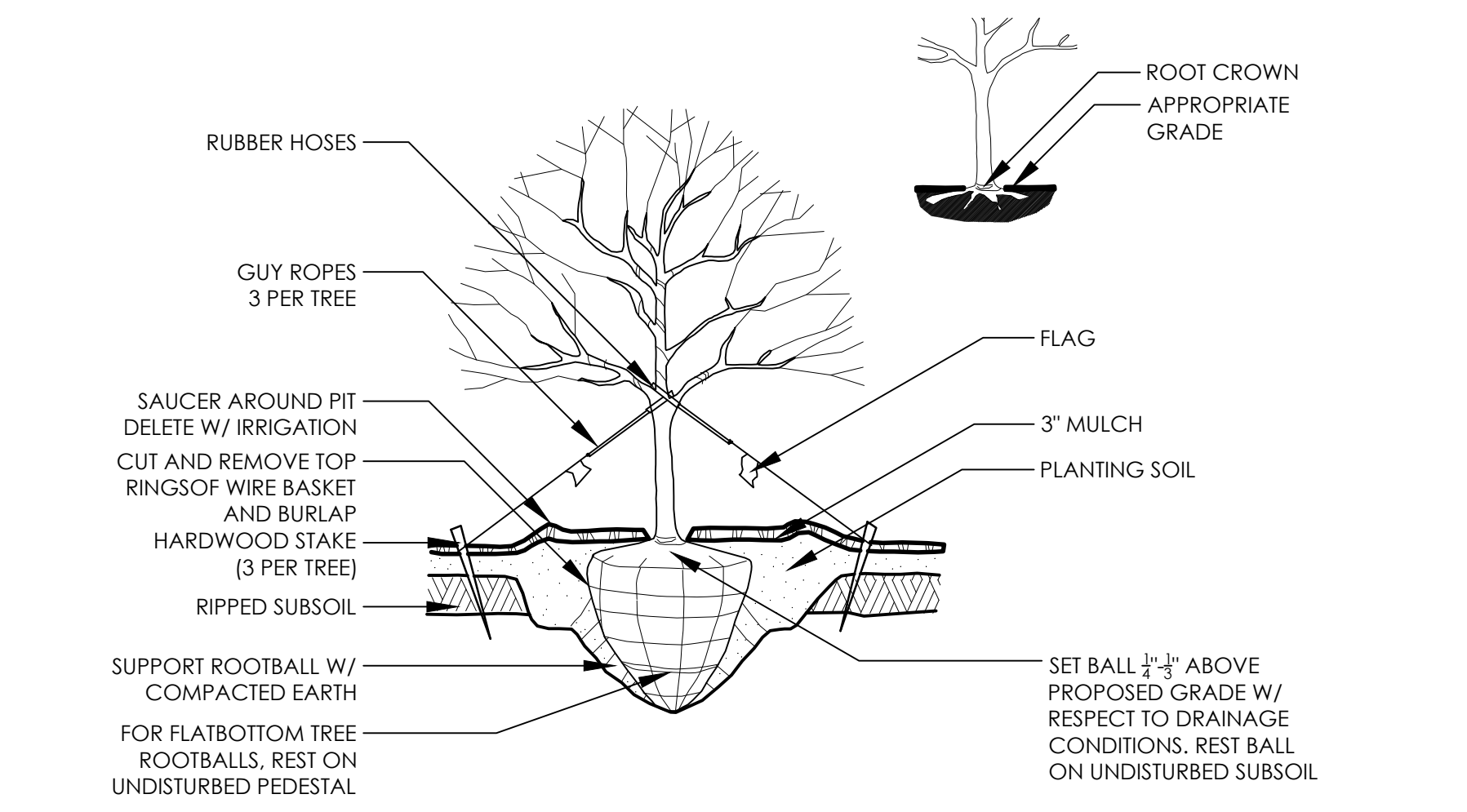
DATE:	2015-10-30
MCE PROJ. #	2735-0129
DRAWN	JL
DESIGNED	JC, ED
CHECKED	JC, ED
PROJ. MGR.	JC

STATUS:
FINAL DESIGN

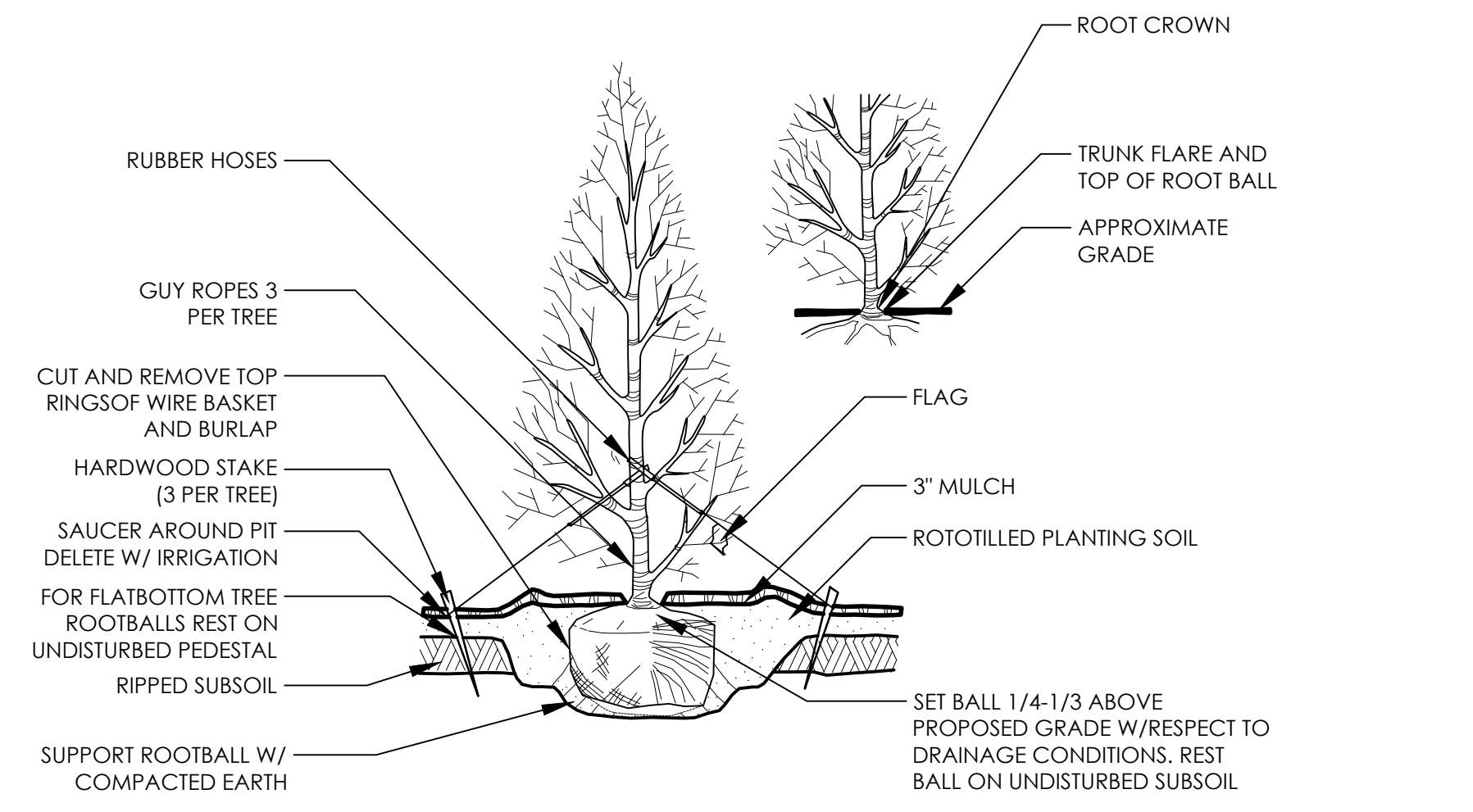
SCALE
AS NOTED

M&C FILE NUMBER
DRAWING NUMBER
L161

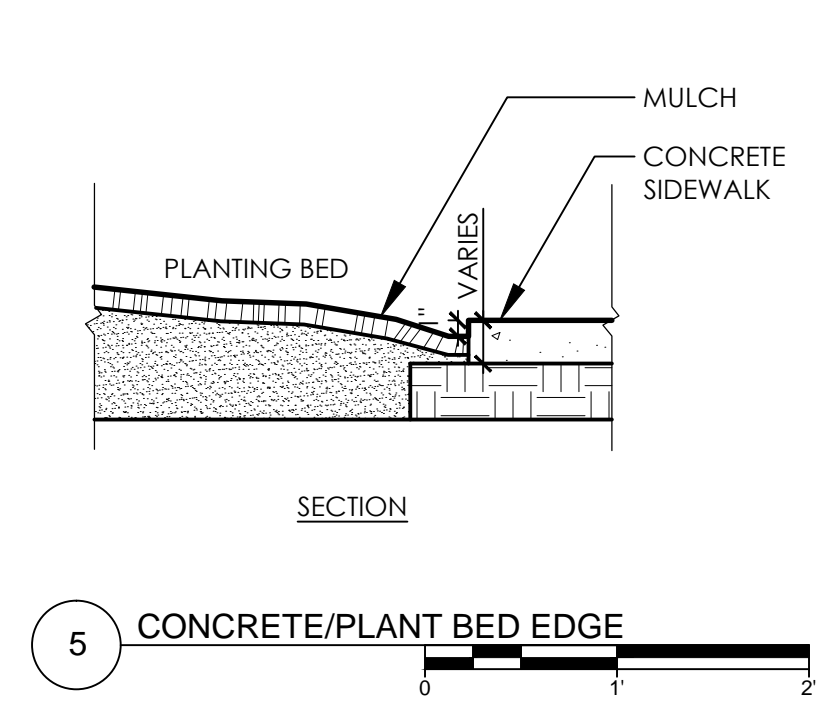
REVISION



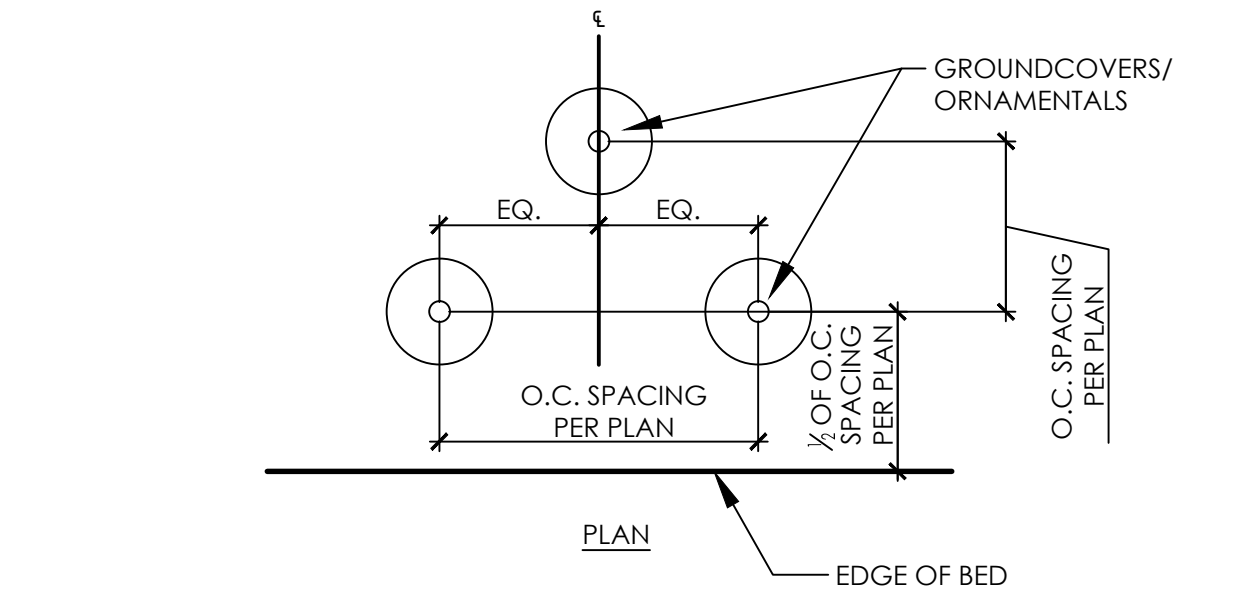
1 RAISED TREE PLANTING
* FOR SPECIES SELECTION REFER TO STREET TREE PLANTING SCHEDULE 8 ON L161 AND L162
* USE BELOW GRADE TREE STABILIZATION PER DETAIL 7/L501 FOR ALL TREES WITHIN PLAYGROUND AREA FENCING
SCALE: NTS



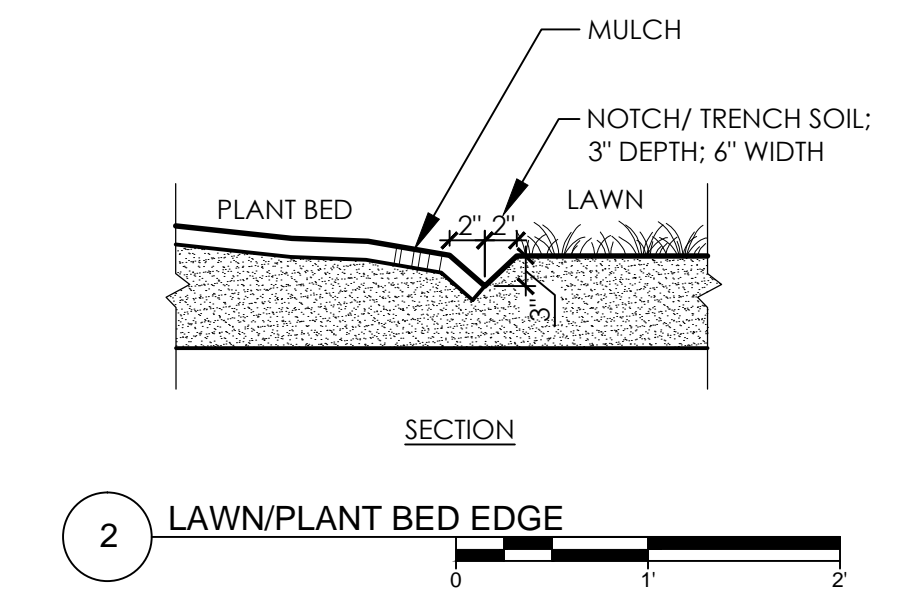
3 EVERGREEN TREE PLANTING
SCALE: NTS



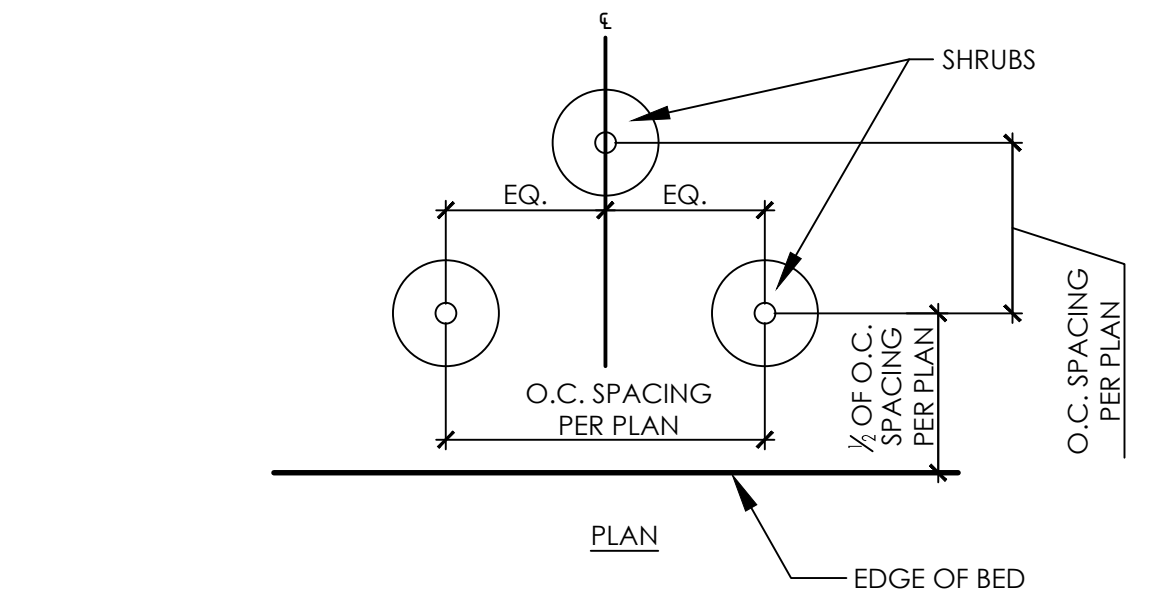
5 CONCRETE/PLANT BED EDGE
SCALE: NTS



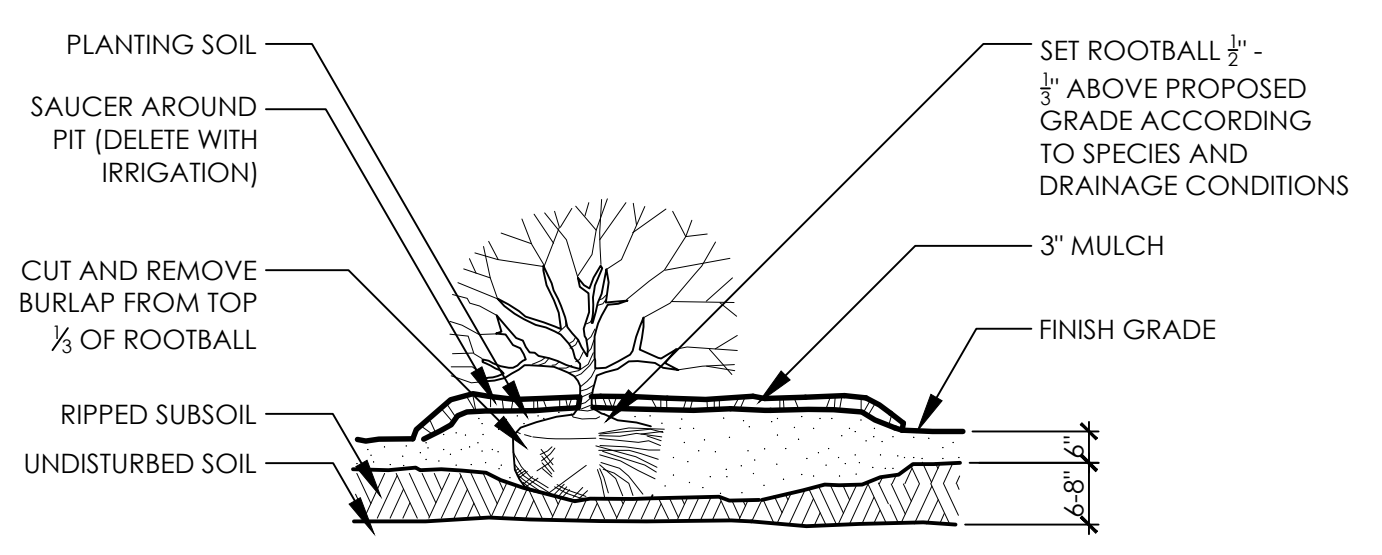
6 GROUND COVER PLANTING
SCALE: NTS



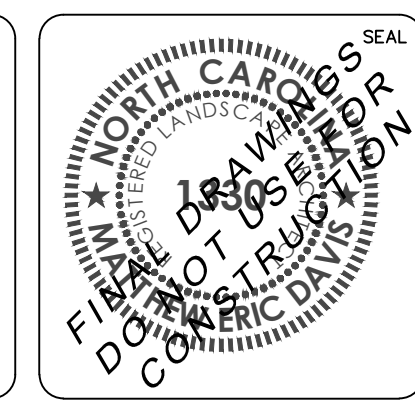
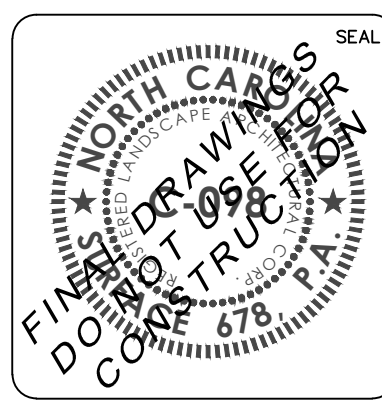
2 LAWN/PLANT BED EDGE
SCALE: NTS



4 RAISED SHRUB PLANTING
SCALE: NTS



REV.	NO.	DESCRIPTION	DATE
E	1	CITY OF WILMINGTON TRC/STORMWATER RE-SUBMITTAL AND CFPWA RE-SUBMITTAL	04/15/2016
D	2	CFPWA RE-SUBMITTAL	03/18/2016
C	3	NEW HANOVER COUNTY SEDIMENT AND EROSION CONTROL RE-SUBMITTAL	03/01/2016
B	4	CITY OF WILMINGTON TECHNICAL REVIEW COMMITTEE SUBMITTAL	02/03/2016
A	5	CITY OF WILMINGTON SUBDIVISION REVIEW BOARD SUBMITTAL	10/30/2015



MCKIM & CREED
License: F-1222
www.mckimcreed.com

NASH RIVERLIGHTS
by Newland COMMUNITIES
Surface 678, P.A.
215 Morris Street, Suite 100
Durham, NC 27701
www.surface678.com
p: 919-419-1199
f: 919-419-1669

RIVER LIGHTS - CONVENTIONAL NEIGHBORHOOD PH 1-A
DETAILS

DATE: 2015-10-30 MCE PROJ. # 2735-0129 DRAWN: JL DESIGNED: JC, ED CHECKED: JC, ED PROJ. MGR.: JC	SCALE: AS NOTED	M&C FILE NUMBER: L501
STATUS: FINAL DESIGN	REVISION	

Approved Construction Plan
Name: _____ Date: _____
Planning: _____
Traffic: _____
Fire: _____

CITY OF WILMINGTON NORTH CAROLINA
Public Services • Engineering Division
APPROVED STORMWATER MANAGEMENT PLAN
Date: _____ Permit # _____
Signed: _____

1 inch

For each open utility cut of City streets, a \$325 permit shall be required from the City prior to occupancy and/or project acceptance.